

## INSTALLATION GUIDE

# WeakNetworkmeter

### General

The package includes the reader and the central unit but also an external router (Huawei B593) and an external antenna for the router (Macab Pro 1000). The package also includes a coupler for the net cable (Deltaco RJ45 coupler). The router's power is led through an external DailySwitcher unit, which means that the router's power unit is connected to this unit. Both the central unit and the router needs power.

The blue Status led on the Smartvatten device indicates that the device is connected to the external router. The green Power led indicates that the device has power. When the router is connected to the network, then the router's Mode led light is blinking blue/green/orange (LTE/3G/2G). If the Mode led is red, then the device has not been able to connect to the network.

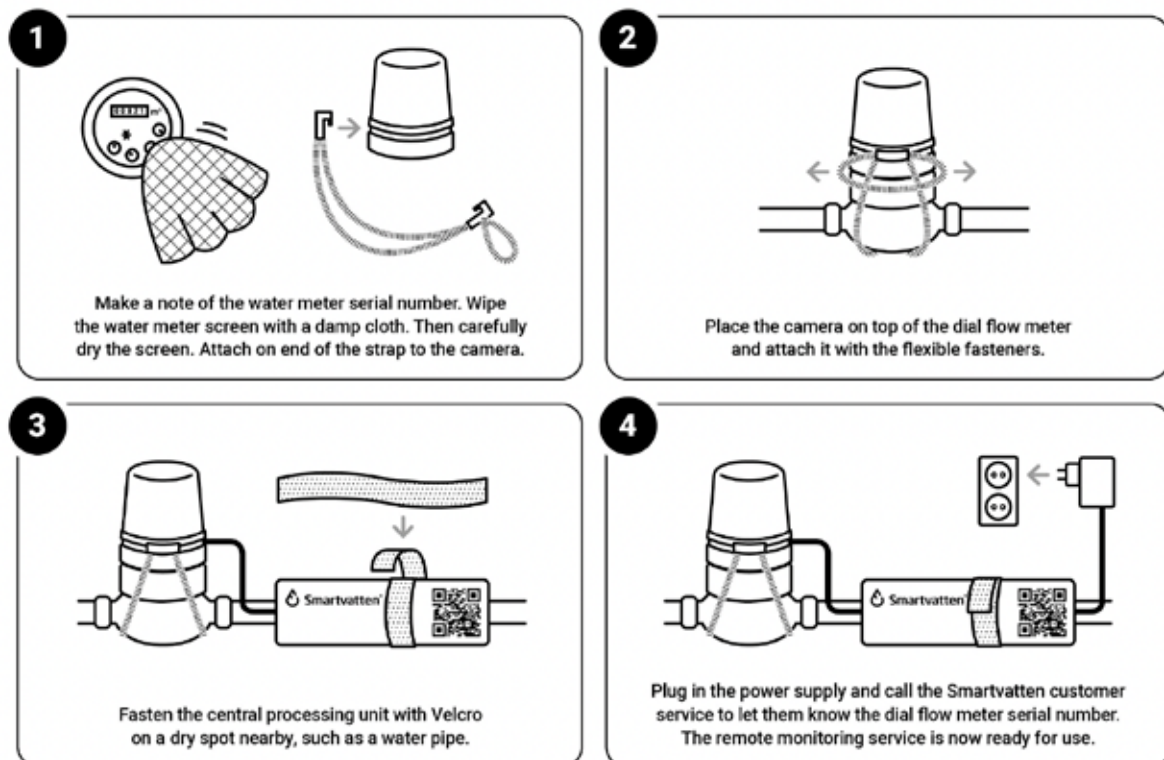
**Attention! Never press the Reset button on the router! The Reset button activates the factory settings and the router will not work correctly anymore.**



## The reader and the central unit

The reader and the central unit are installed in a similar style compared to a general reader installation. Only the installation of the antenna and the external router differs from a general reader installation.

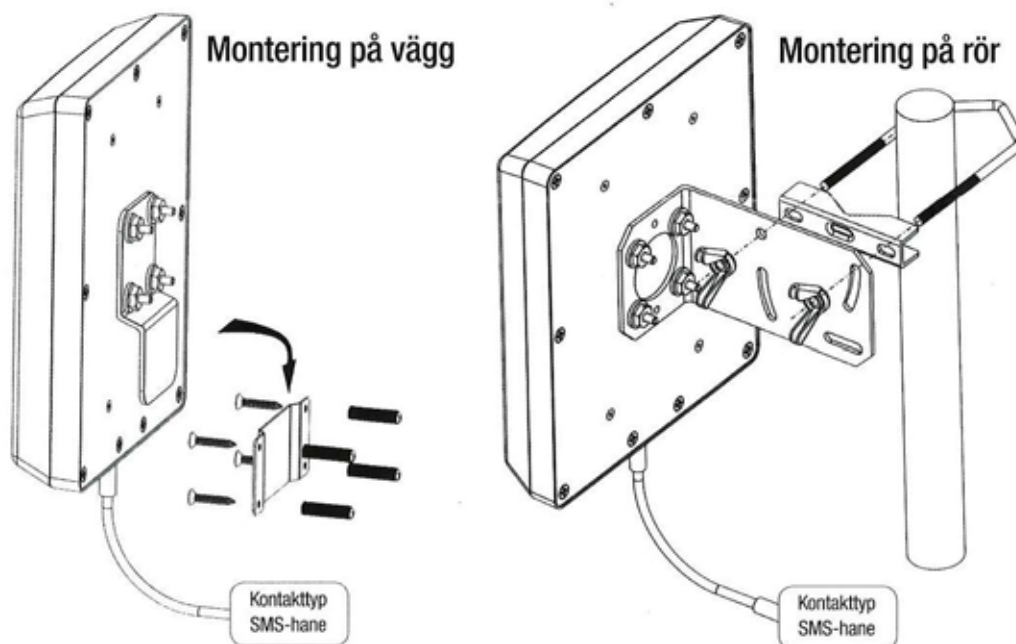
### How to start using the Smartvatten remote monitoring service:



Problems with installation? Please contact our customer service helpline on +358 20 741 4020 or by e-mail at [info@smartvatten.com](mailto:info@smartvatten.com).

## The antenna and the router

The antenna can be used both indoors and outdoors. Indoors, it is recommended to install the antenna close to the window opening. For best result, please install the antenna outdoors. The antenna connects with a 2m cable, which should be long enough for the router. The router is connected to the central unit with a net cable, which length is usually 2m. A coupler for the net cable is also included. By using the coupler it is possible to install the router a longer distance than 2m from the antenna. You should connect the antenna cable to the router with your fingers or with a torque wrench. Do not use a monkey wrench or pliers because the coupler breaks easily.



When the installation is done and the units are plugged in and set on, please contact the Smartvatten customer service (+358 20 741 4020).